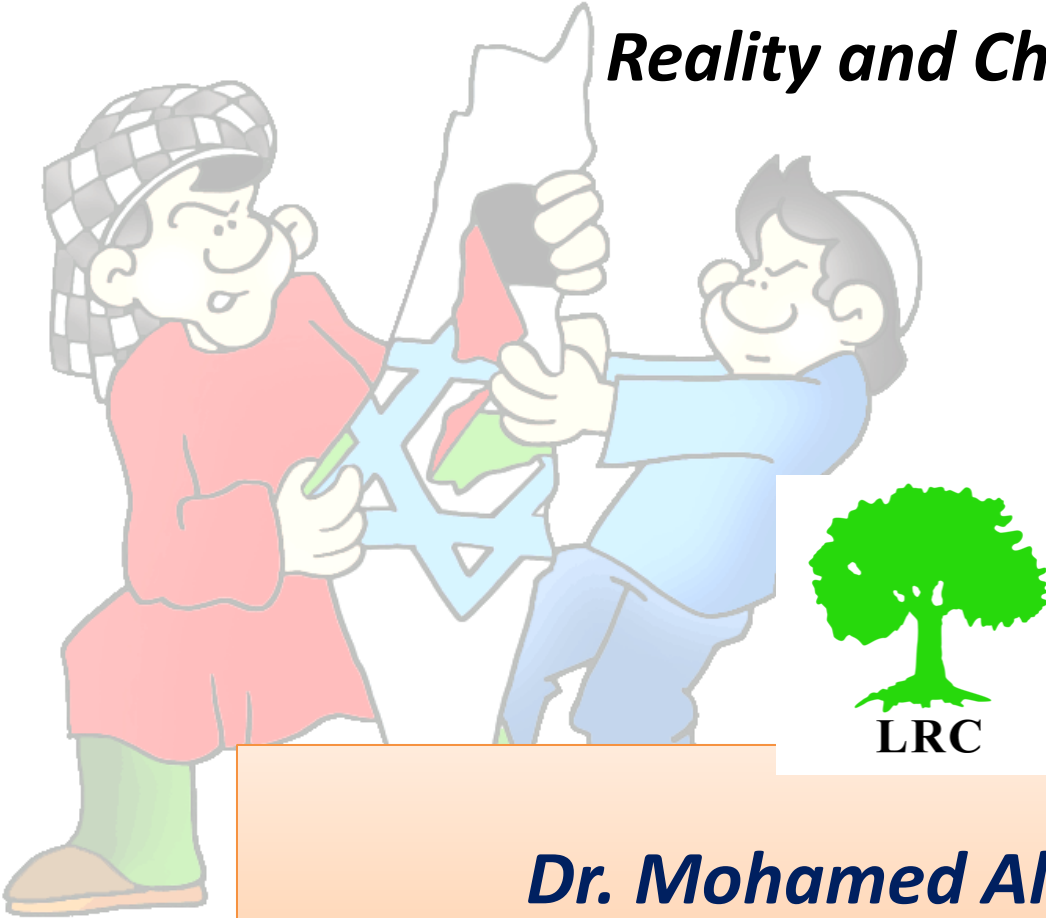


Palestinian Food Sovereignty

Reality and Challenges



LRC

Dr. Mohamed Alsalimiya

Land Research Center – LRC

Arab Studies Society

Palestine

Tel. +972-2-2217239

Fax +972-2-2290918

Web Page: www.lrcj.org

98.5%

92%

44%

22%

13%

11%

8%



The A,B,C Partitioning

A - 17.7 %

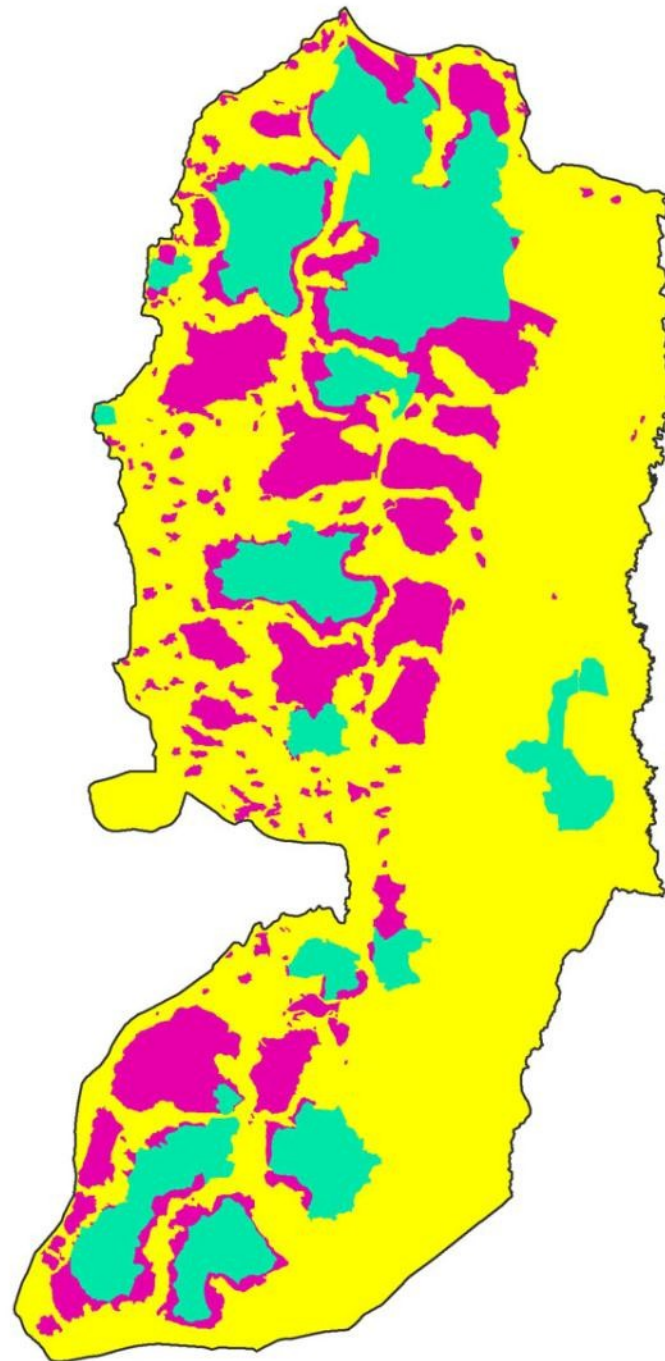
AREA A: comprising all major population centers, under the full control of the PNA;

B - 18.4 %

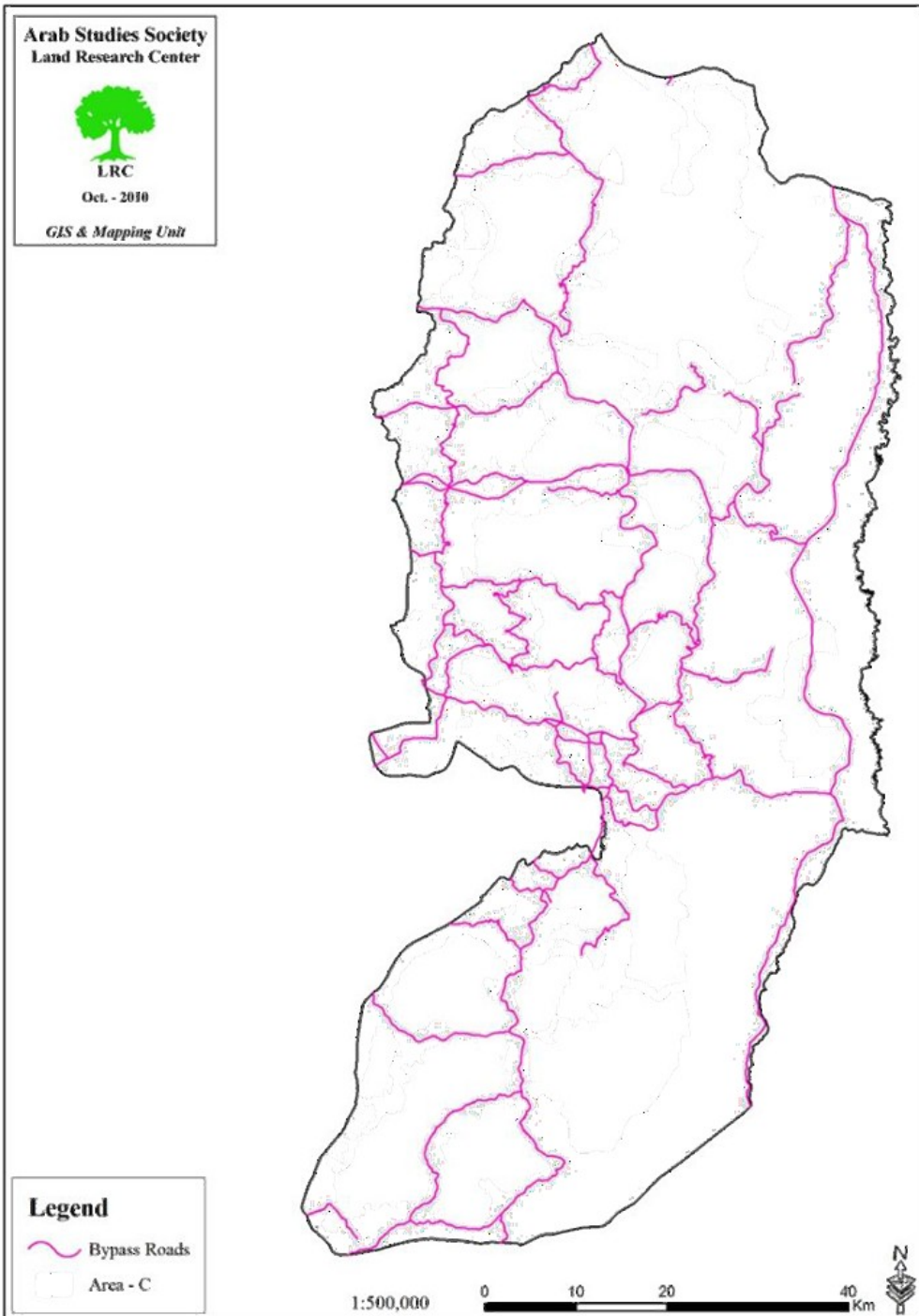
AREA B: comprising most rural villages, under Palestinian civil control and Israeli military control;

C - 63.9 %

AREA C: approximately 64% of the West Bank, under complete Israeli control for both security and civil administration



The fact of area C





Susya

Military orders to transfer of land to a closed military area in Wadi al-Maleh - Tubas



DANGER סכנה خطر
שטח אש הכניסה אסורה!
منطقة لاطلاق نار
الدخول ممنوع!
FIRING AREA ENTRANCE FORBIDDEN



Annexation & Expansion Segregation Wall

209 Colonies

Colonies Built-up Area - **200** Km²

271 Israeli Outposts

990 Km of Bypass Roads

Destroyed about **99** Km² of Pals. Land

Wall Total Length = **781** Km

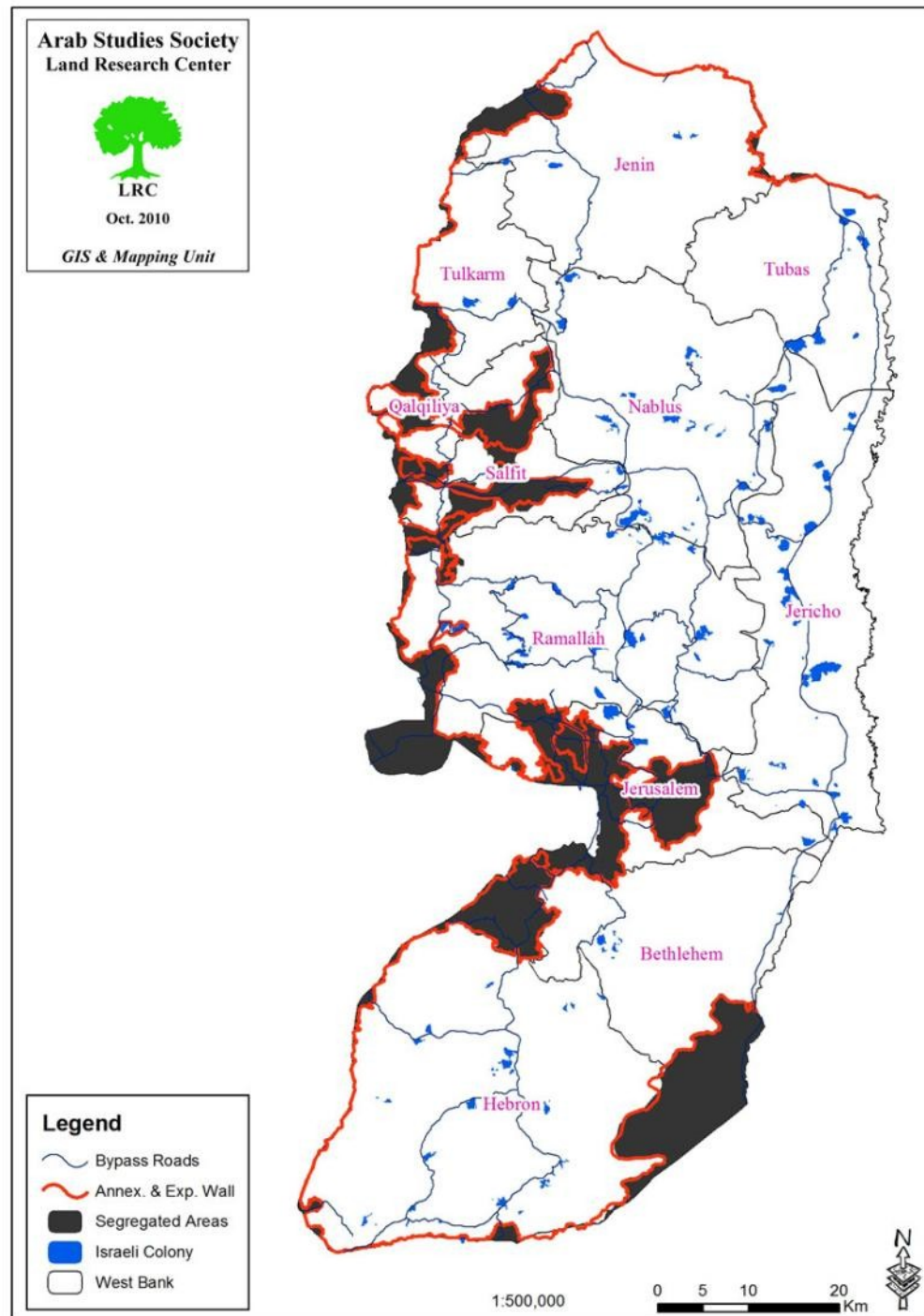
Under Wall Route = **44.7** Km²

Lands separated behind
the Wall = **738.5** Km²

Pal. Isolated and semi-isolated
localities = **111**

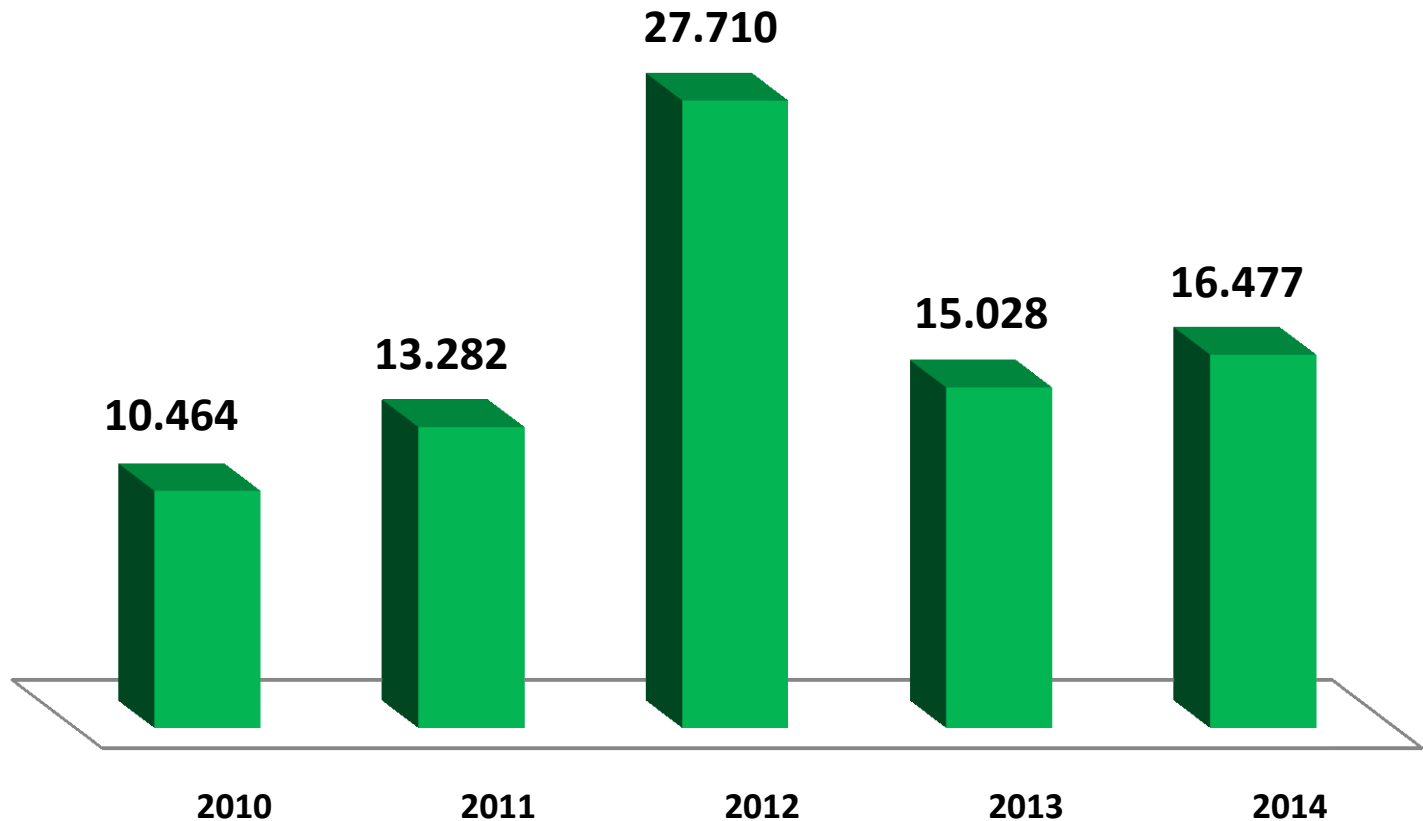
Pal. Completely isolated
localities = **65** – Around **135,000** People

Total loses about **1,210** Km²



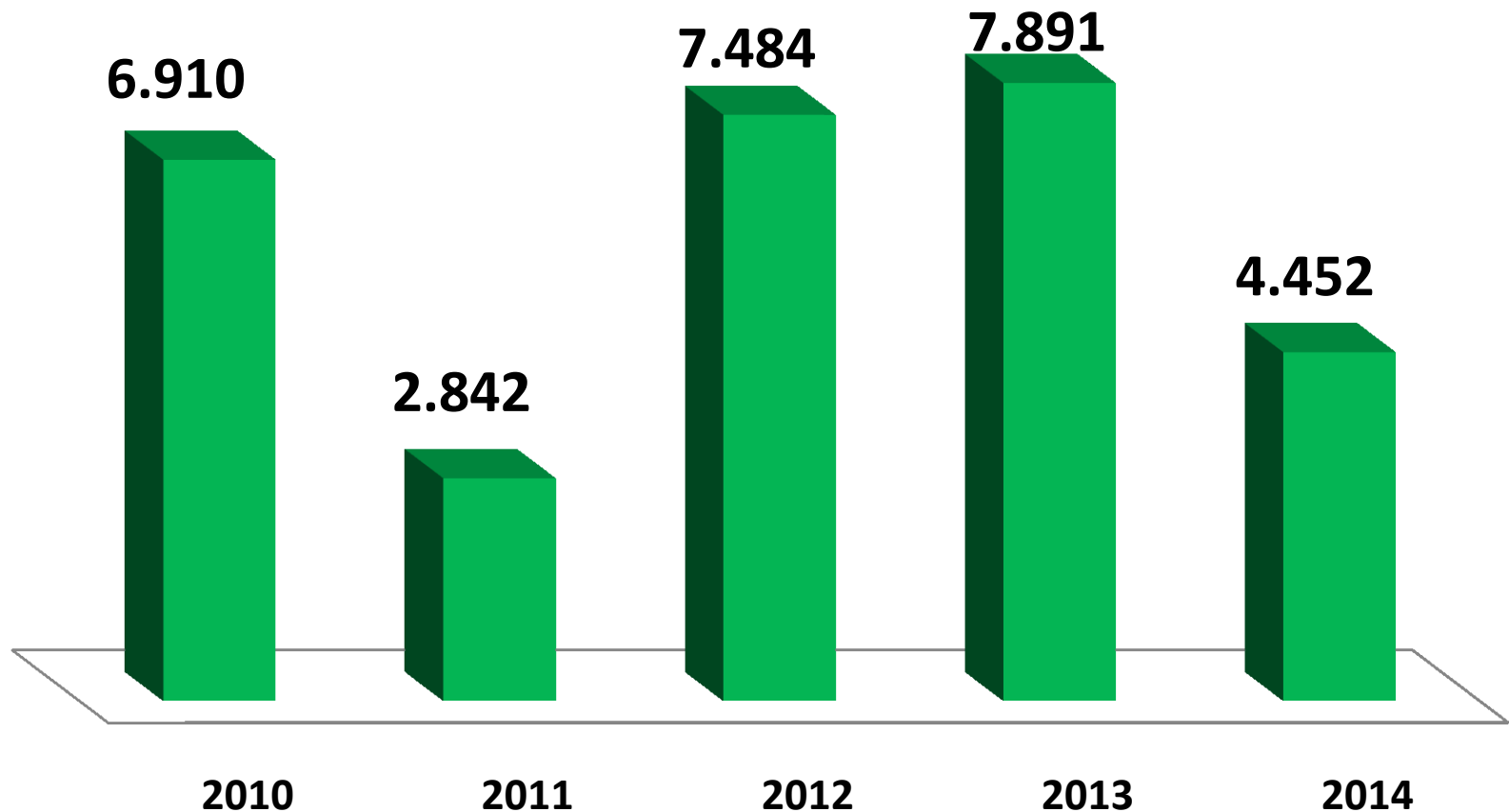
Land Confiscation and Destruction

Land Confiscation in the West Bank



Areas in Dunums 83,000

Destruction of Agricultural Land



Areas in Dunums 30,000

Land Bulldozing and Destruction in Photos





Dumping Beit Ummar lands with colonies wastewater / Hebron



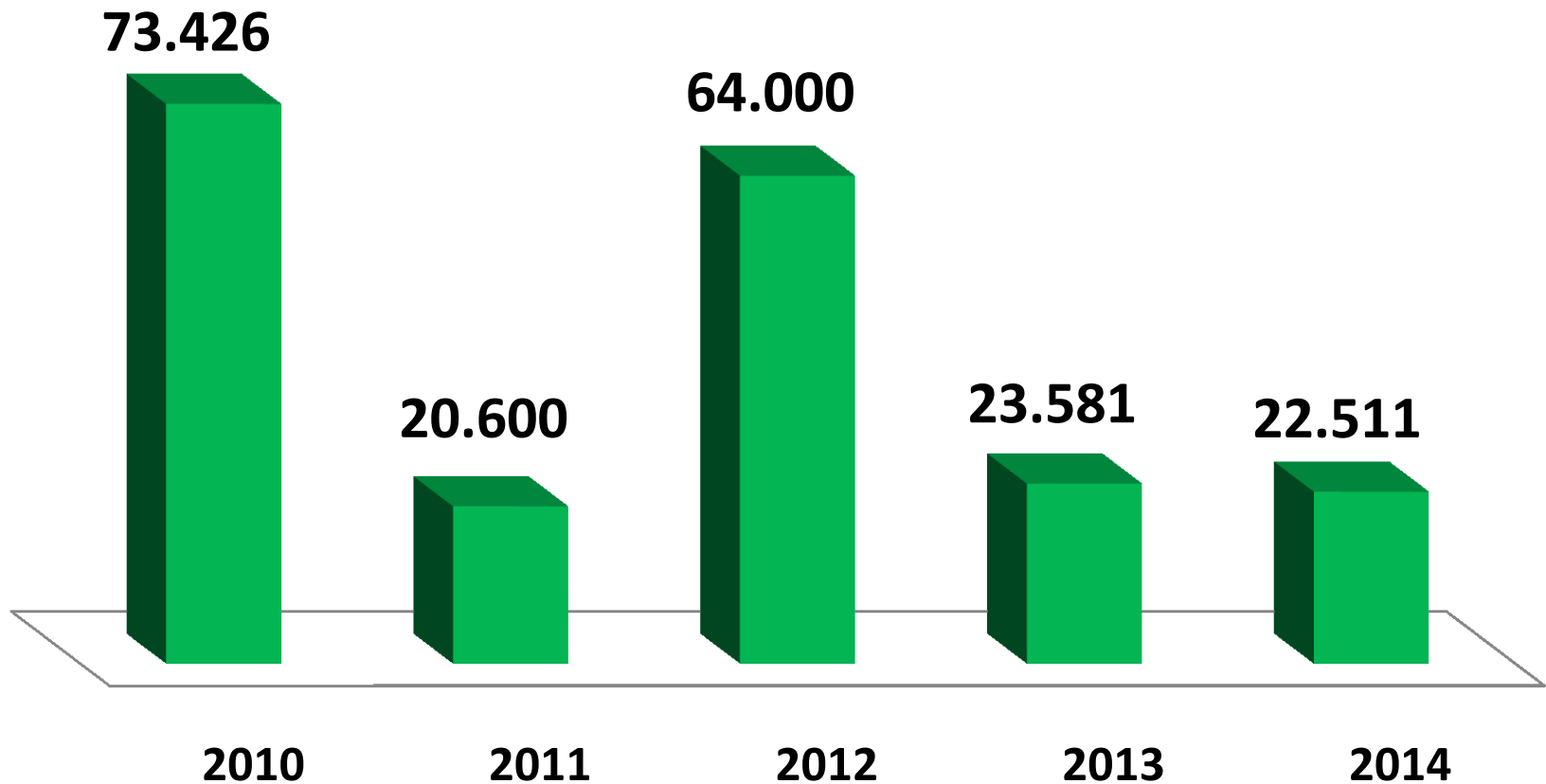
Palestinian olive trees executed in by Israeli settlers in cold blood –A'inabus / Nablus





Uprooted and Bulldozing Palestinian Trees

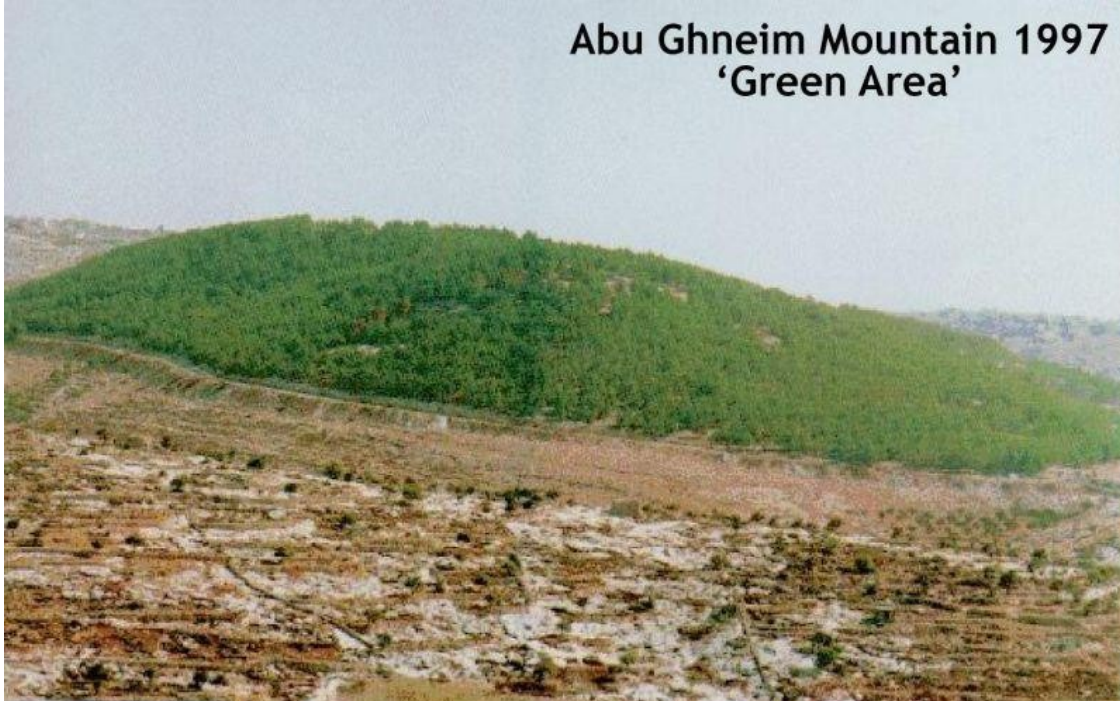
Israeli Violations against Pal. Trees



More than 200,000 from the Pal. Trees were Damaged totally or partially

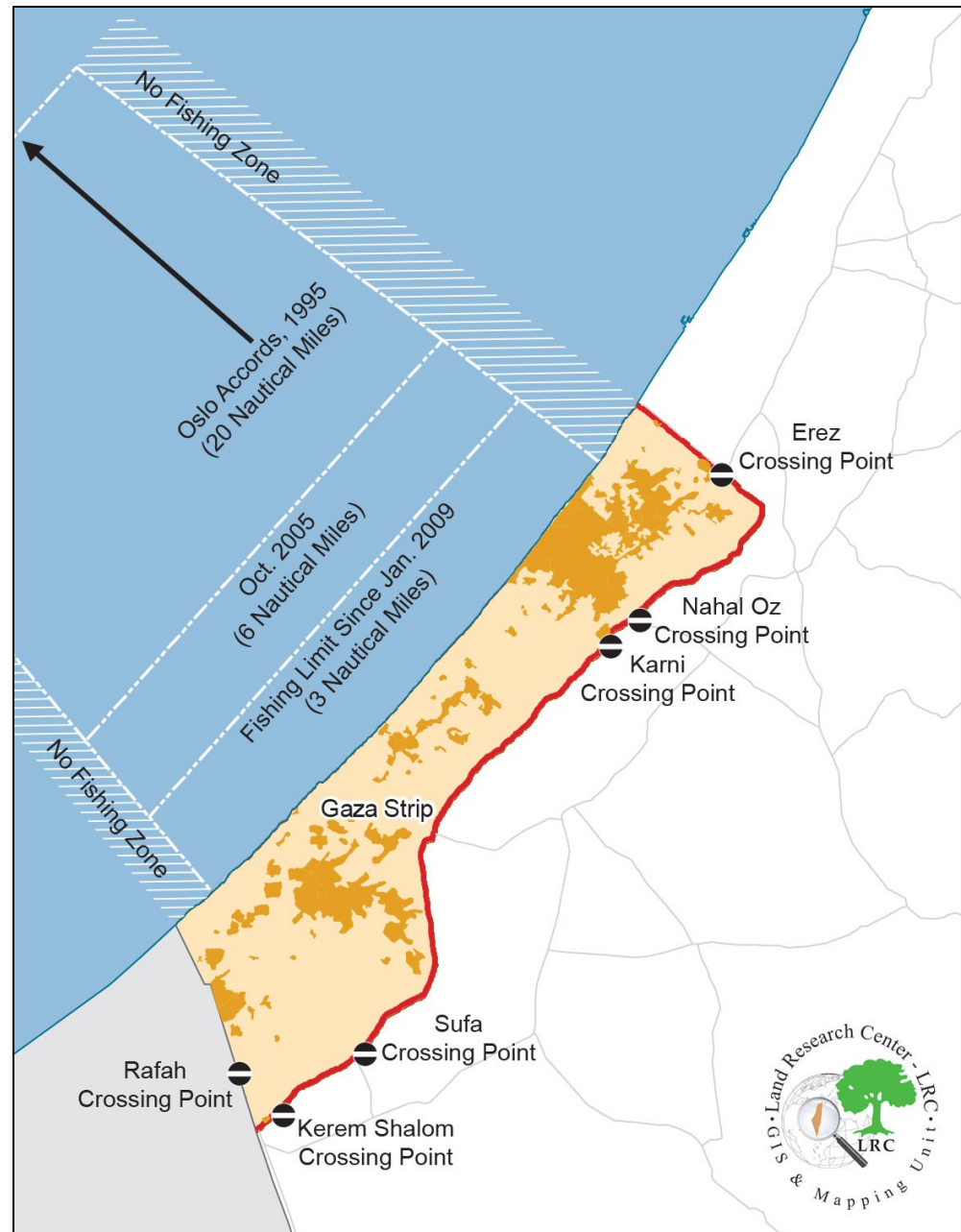


Abu Ghneim Mountain 1997
'Green Area'



Imad Atrash,
ARIJ Presentation

- **Blockade imposed by Israel on the Gaza Strip since June 2007:**
 - collective punishment imposed on an entire civilian population in direct violation of article 33 of the Fourth Geneva Convention.
- **Most of the fundamental parameters of Israel's blockade remain in place**
 - **Movement** of Gaza's population in and out of the Strip remains difficult and largely banned
 - **Limited access of humanitarian assistance**
 - importation of **basic construction materials** remains heavily **restricted**
- **Israel imposes a 1.5 km 'buffer zone' within the Gaza Strip**
 - Denying Palestinians access to 35% of the Strip's agricultural land
- **Sea areas beyond 3 nautical miles from shore are barred for Palestinian access**
 - 200 Nautical miles is the Exclusive Economic Zone for UN member states
 - **65,000 people affected by restrictions to maritime areas**



Gaza Strip following the Israeli 2005 Disengagement (Redeployment)

1994

29 Km² (8%)

Length: 58 Km

Width: 500 meters

2005

61 Km² (17%)

Length: 58 Km

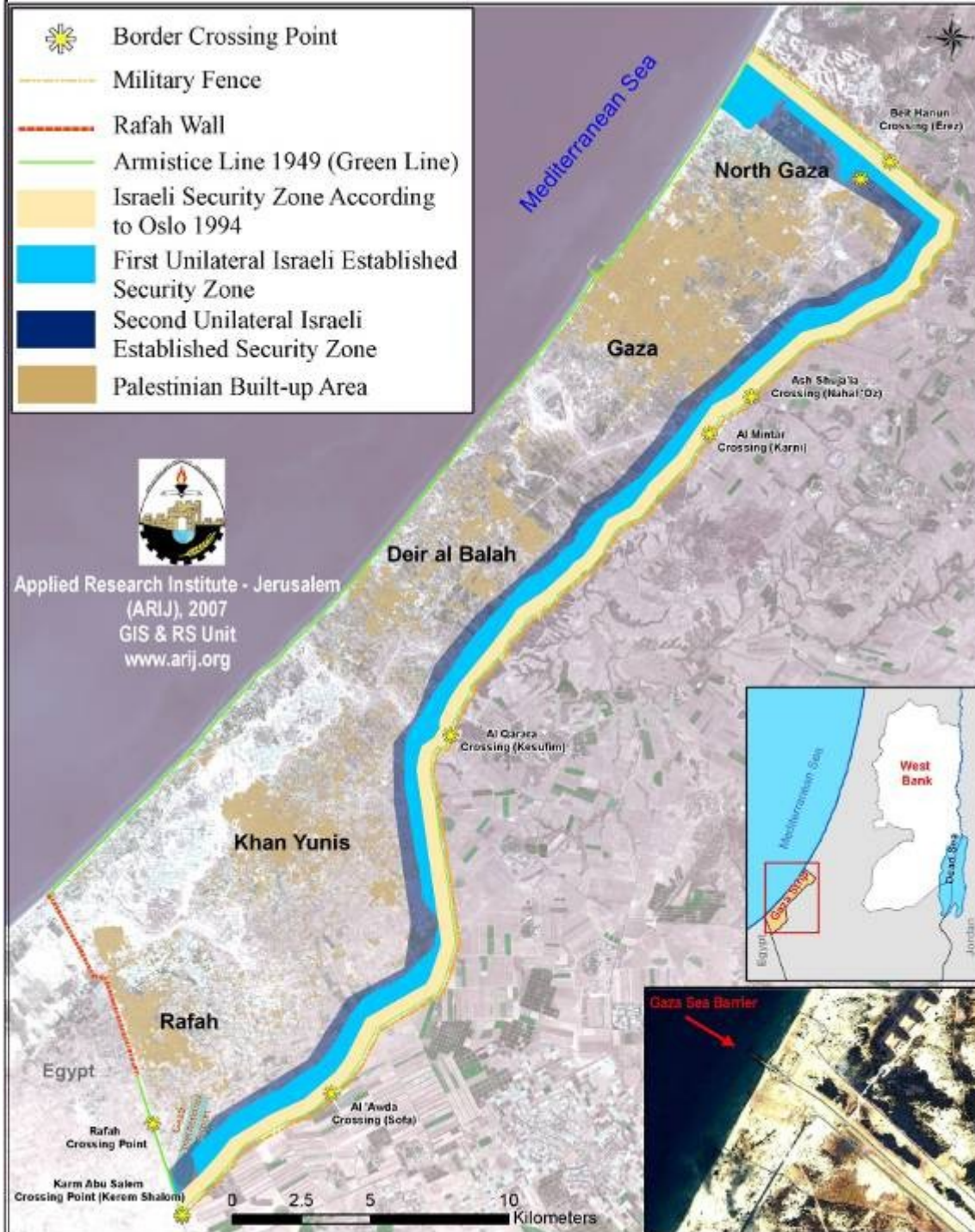
Width: 800-1300 meters

2007

87 Km² (24%)

Length: 58 Km

Width: 1500 meters



Effect of Israeli's Military offensive on Gaza's Agriculture

1800[~] HECTARES OF AGRICULTURAL FIELDS DAMAGED

Rural Area Damage Assessment Summary					
	Total Greenhouses Affected	Destroyed Greenhouses	Severely Damaged Greenhouses	Moderately Damaged Greenhouses	Damaged Areas (Ha)
North Gaza	107	44	29	34	410
Gaza	82	37	22	23	460
Deir Al Balah	254	140	37	77	135
Khan Younis	523	318	72	133	480
Rafah	297	118	54	125	370
TOTAL	1,263	657	214	392	1,855



OCHA estimates that around 40,000 people involved within the agriculture/fishery sector were directly affected by the crisis.

Effect of Israeli's Military offensive on Gaza's Agriculture

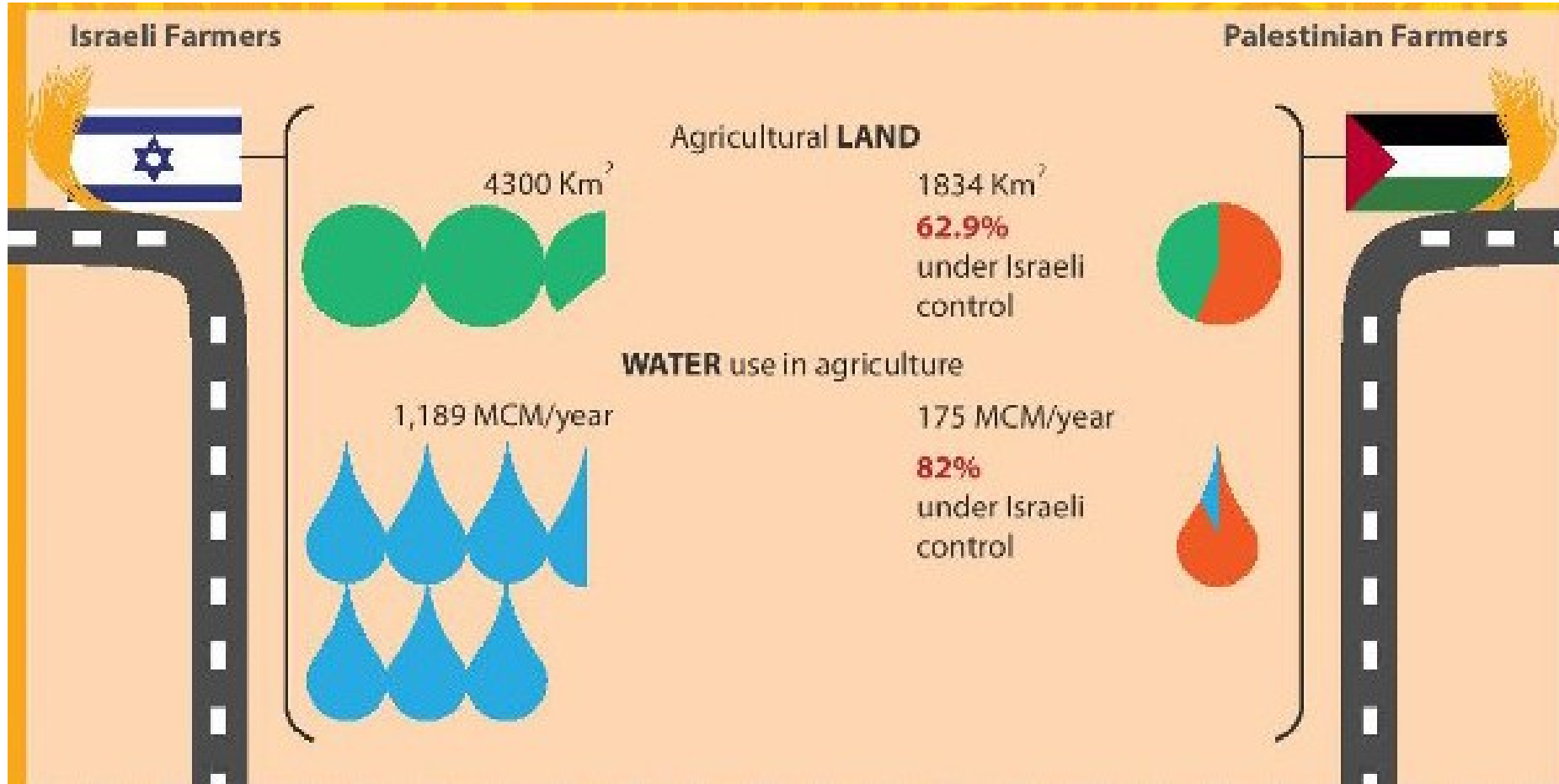


Food insecure in Palestine

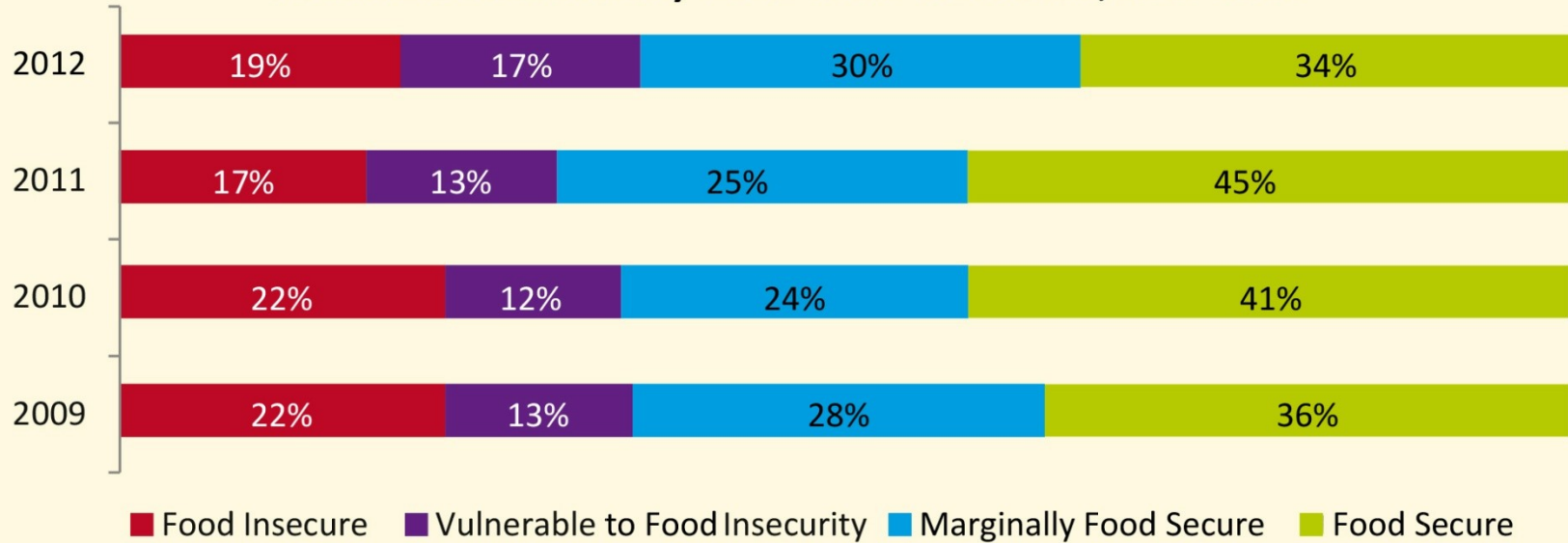
Current Status



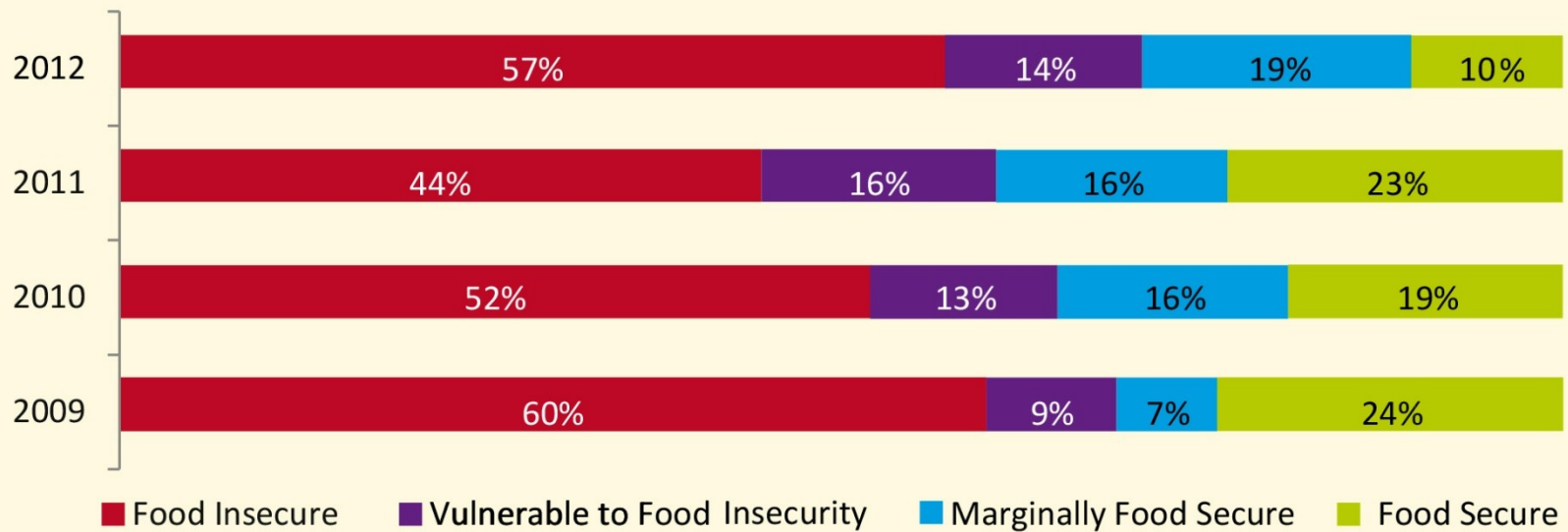
Food insecurity in Palestine has political root



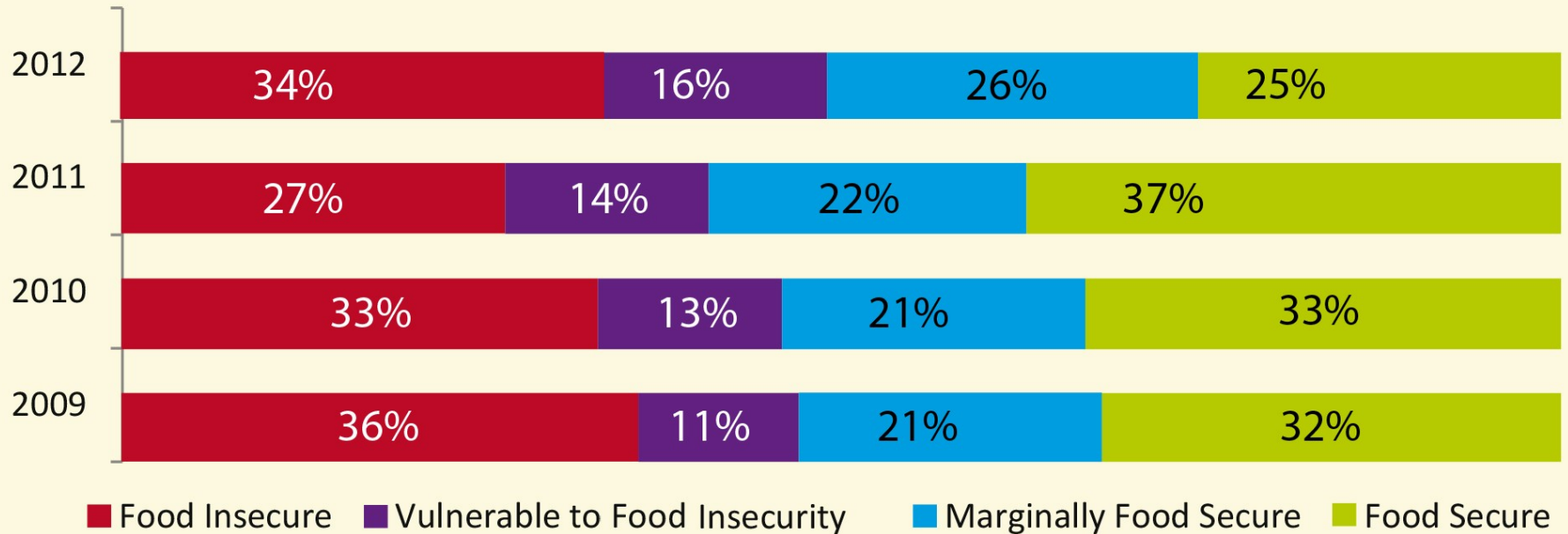
Household food security levels in the West Bank, 2009-2012



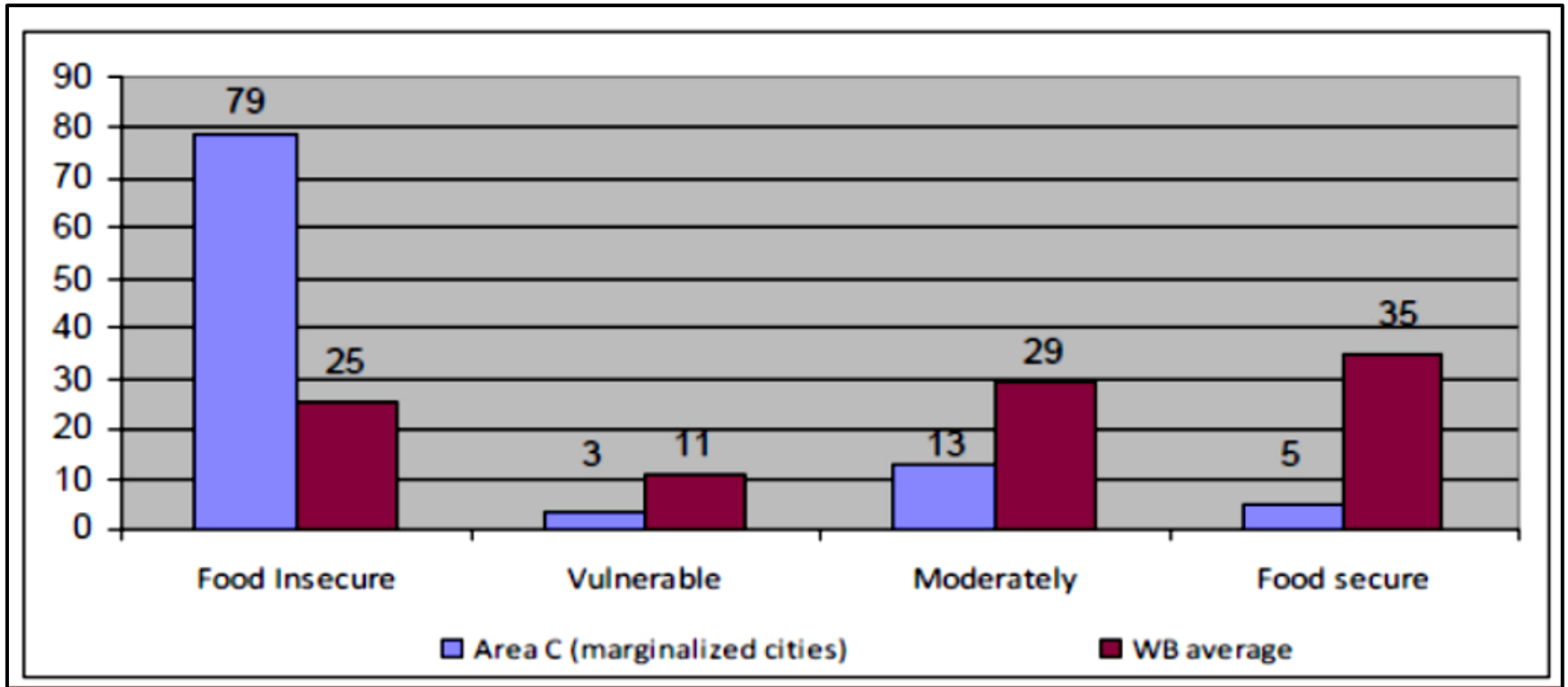
Household food security levels in the Gaza Strip, 2009-2012



Household food security levels in the State of Palestine, 2009-2012



Food Security Levels among Households in Area C



Defending Palestinian Food Sovereignty against Occupation



Toward Palestinian Food Sovereignty

- In area C/ no pipe water: In the summer months, **50%** of the entire monthly household expenditure goes to cover water costs.

World bank:

“If businesses and farms were permitted to develop, this would add as much as **USD 3.4 billion (35%)** to the Palestinian GDP”.

Area C High potential for land development



West Bank Area = **5,659** Km²

Area – C = **3,458** Km²

63.9 % of West Bank

Suitable for Reclamation = **303** Km²

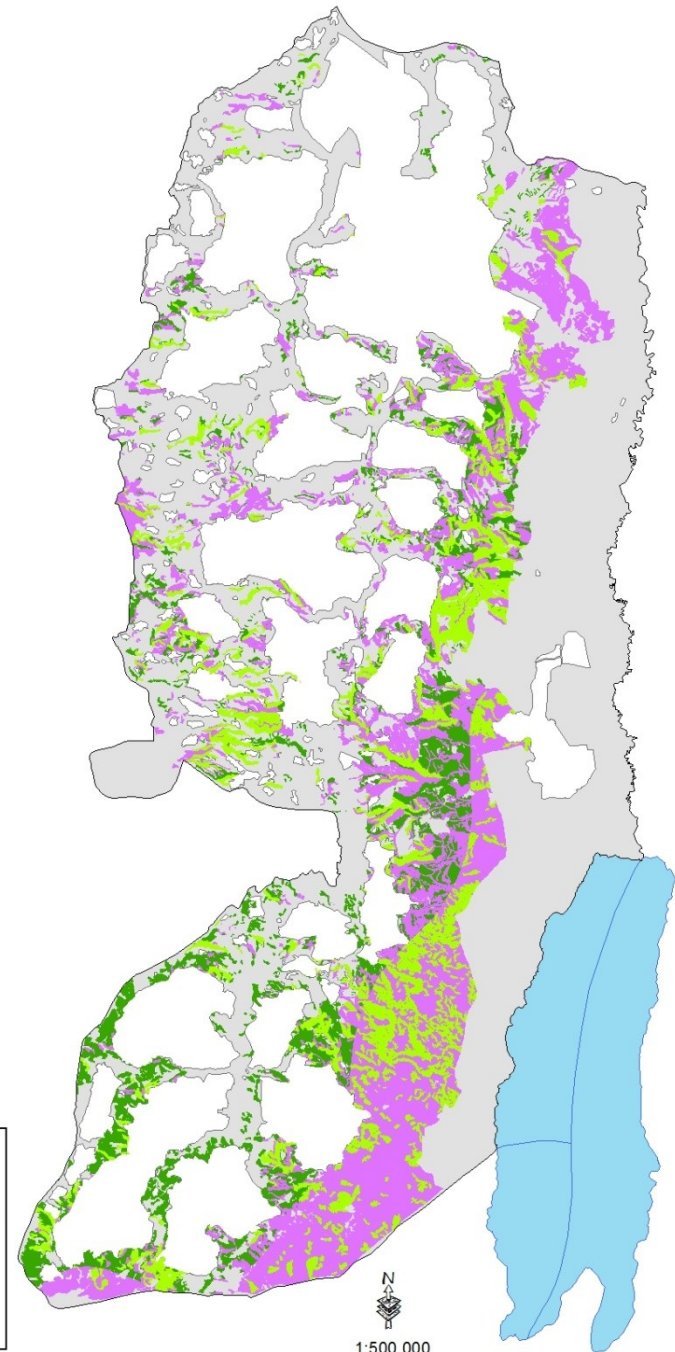
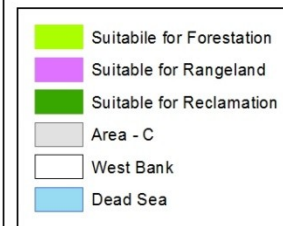
9% of Area - C

Suitable for Rangeland = **688** Km²

20% of Area - C

Suitable for Forestation = **278** Km²

8% of Area - C



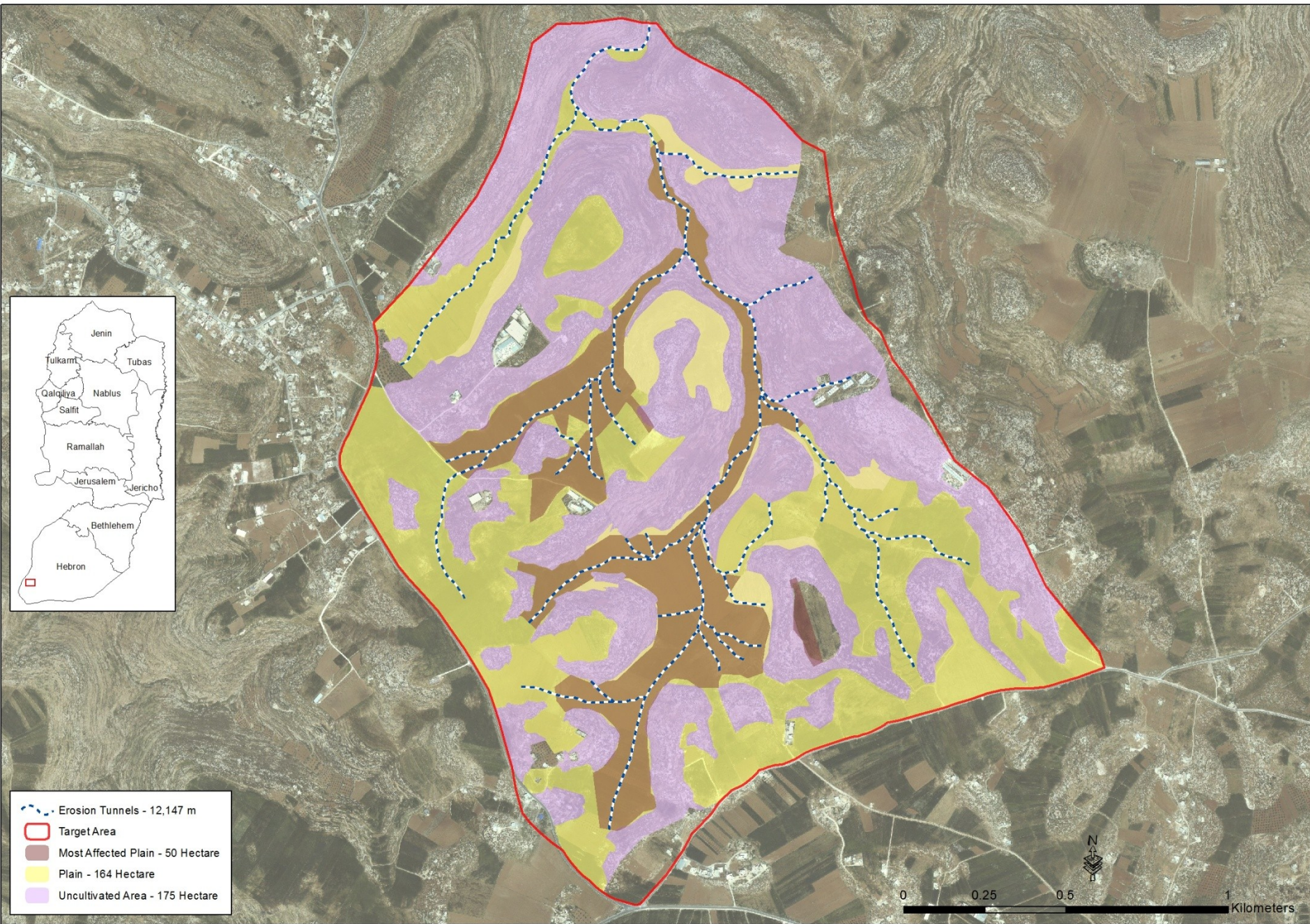
**“Eco-sustainable intervention to enhance agro-pastoral productivity
in arid and semi-arid areas of Hebron District “
CRIC/LRC project code 010139_CRIC_TOC**

Implemented by

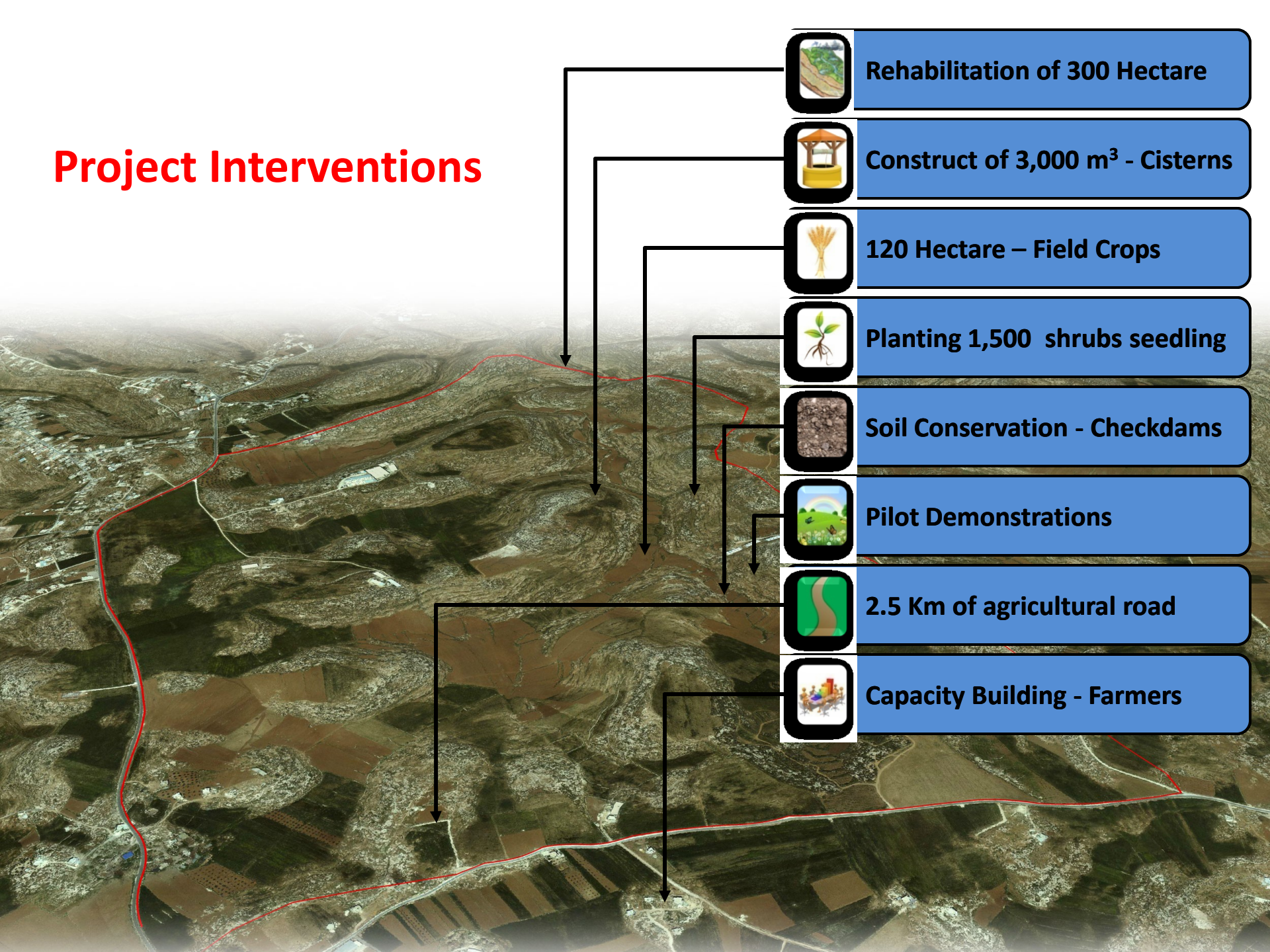


In partnership with





Project Interventions



Rehabilitation of 300 Hectare



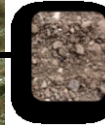
Construct of 3,000 m³ - Cisterns



120 Hectare – Field Crops



Planting 1,500 shrubs seedling



Soil Conservation - Checkdams



Pilot Demonstrations



2.5 Km of agricultural road



Capacity Building - Farmers





**‘WE HAVE ON THIS EARTH WHAT MAKES LIFE
WORTH LIVING’**

Palestinian Poet Mahmoud Darwish